



HOME LIVING

Luxury Vinyl Tile



WOOD



NS01 Cabin Oak Slate

184.2 x 1219.2 mm



NS02 Tannery Oak

184.2 x 1219.2 mm



NS03 Foundry Oak

184.2 x 1219.2 mm



NS04 Smithy Oak

184.2 x 1219.2 mm



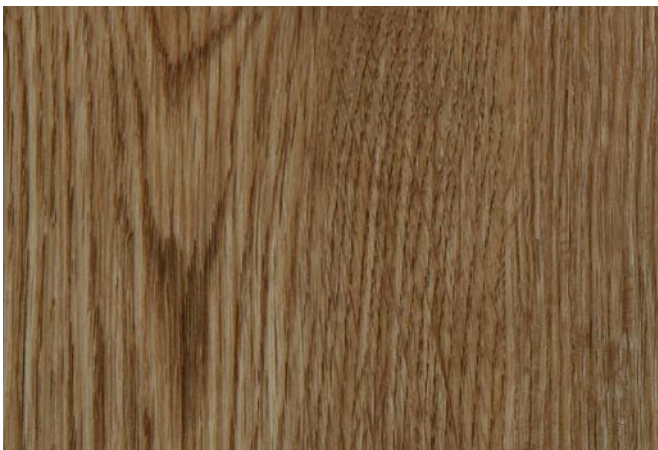
NS05 Silver Haze

184.2 x 1219.2 mm



NS06 Smokehouse Oak

184.2 x 1219.2 mm



NS07 Natural Oak

184.2 x 1219.2 mm



NS08 Aristan Oak

184.2 x 1219.2 mm

WOOD



NS09 Cross Sawn Oak

184.2 x 1219.2 mm



NS10 Driftwood

184.2 x 1219.2 mm



GROUTING STRIPS

(3 x 914 mm)

GS01 Steel

GS02 Cream

GS03 Dark Grey

GS04 Carbon

STONE



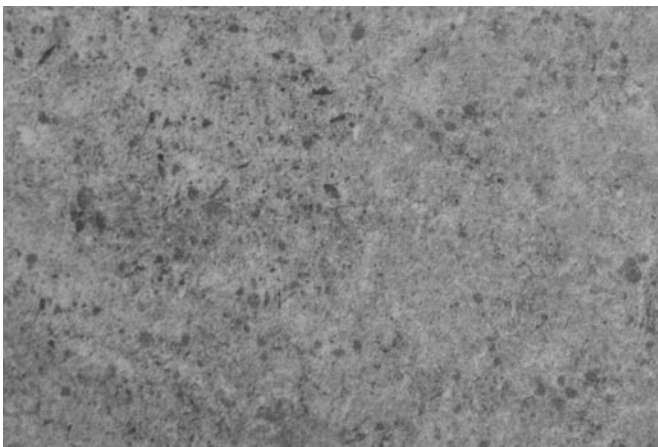
NS11 Pale Ground

304.8 x 609.6 mm



NS12 Fairo Cream

304.8 x 609.6 mm



NS13 Dusk

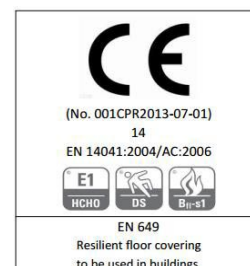
304.8 x 609.6 mm



NS14 Pitch Black

304.8 x 609.6 mm

PROPERTIES	STANDARD	UNIT	TEST RESULT
Wood Plank size	EN 427	cm	18,42 x 121,92 cm
Stone Tile size	EN 427	cm	30,48 x 60,96 cm
Thickness	EN 428	mm	2,00 mm
Wearlayer	EN 429	mm	0,30 mm
Surface treatment			PUR
Bevel			No
Click			No
Weight per sqm	EN 430	gr/m2	3630
Pieces per box (plank)		piece	15
Pieces per box (tile)		piece	18
Sqm per box (plank)		m2	3.37
Sqm per box (tile)		m2	3.34
Boxes per pallet (plank)		box	80
Boxes per pallet (tile)		box	80
Sqm per pallet (plank)		m2	269.42
Sqm per pallet (tile)		m2	267.56
Classification	EN 685	class	23-31
Fire classification	EN 13501-1	class	Bf1-S1
Slipresistance	DIN 51130	class	R9
	EN 13893	class	DS
Weargroup	EN 660-1		T
Residual indentation	EN 433		0.05 mm
Thermal conductivity	EN 12667:2001		0.076 W/(m·K)
Thermal resistance	EN 12667:2001		0.036 m ² ·K/W
Electrostatic properties	EN 1815		<2.0 KV
Castor chair	EN 425		yes type W EN12529
Dimensional stability	EN 434		≤0.12%
Light fastness	ISO 105-BO2	degree	level ≥6 method A
Determination of impact sound	E 492-09		IIC=63
Sound reduction	ISO 717-2		5 dB
Chemical resistance	EN 423		yes
Floor heating system		degree	suitable max.27°C
CE marking	EN 14041		EN 14041:2004+AC:2005+AC:2006
Guarantee			residential 10 years - commercial 5 years



GROUTING STRIPS

(3 x 914 mm)

GS01 Steel

GS02 Cream

GS03 Dark Grey

GS04 Carbon